

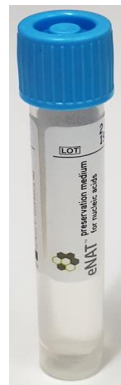
HELICOBACTER PYLORI, NUCLEIC ACID, STOOL

-HepyNhO (6314)

The examination looks for Helicobacter pylori, which cause inflammation of the stomach. The test shows H. pylori bacteria in the stool and clarithromycin resistance mutation in the bacteria. The test will find the infection and helps in the selection of an evicition treatment.

Sampling equipment

- Wide sample container or a kidney dish
- Name tag
- A plastic bag (for example, Minigrip®)
- eNat® sampling tube and sampling swab



PLEASE NOTE!

The eNat® sampling tube contains guanidinium thiocyanate, which is **harmful to humans if swallowed, in contact with skin or eyes.** In the event of spillage, rinse skin with plenty of water. If the chemical has been swallowed, rinse the mouth, drink a little water and contact the Poison Information



Preparing for sampling

Certain medication should be avoided before the sampling. **Any discontinuation of medication should always be discussed with a doctor.**

Medicine that cannot be taken for 24 hours before the examination

- Hydrochloric acid secretion inhibitors: Cytotec, Famotidin Stada, Pepsid, Ranisan, Ranitidin Mylan, Ranixal, Zantac, Inside Brus, Ranitidin-Ratiopharm
- Agents impacting the intestinal motility: Constella, Gaspid, MCP-Ratiopharm, Metoclopramide Accord, Metoclopramide Orion, Motilium, Motilium Takeda, Motilium Tropfen, Primperan, Resolor, Mestinon, Ubretid Takeda Pharma
- Antacids: Balancid Novum, Magnesiamaito, Rennie, Natriumbikarbonat Recip
- Cytoprotective agents: Antepsin, Galieve, Gaviscon

Medicine that cannot be taken for two (2) weeks before the examination

- Courses of antibiotics
- Proton pump inhibitors: Acidal, Esomeprazol Actavis, Esomeprazol Krka, Esomeprazol Orion, Esomeprazol Ratiopharm, Esomeprazol Sandoz, Gasterix, Lanrec, Lansoprazol Krka, Lansoprazol Mylan, Lansoprazole, Lantil, Lanvone, Losec, Nexium, Omeprazol Actavis, Omeprazol Ratiopharm, Omeprazol Sandoz, Omestad, Pantopratsoli Sun, Pantoprazol Actavis, Pantoprazol Krka, Pantoprazol Mylan, Pantoprazol Orion, Pantoprazole Ratiopharm, Pariet, Rabeprazol Krka, Somac, Somac Control, Zolt.

Medicine that cannot be taken for four (4) weeks before the examination

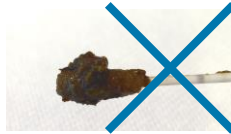
- Helicobacter pylori eradication therapy: Helipak A, Helipak K

Sampling

- Defecate onto a disposable container or a piece of toilet paper. Take a sample of the stool immediately after defecating. Bloody diarrhoea cannot be used as a sample.
- Open the eNat[®] sampling package.
- Open the turquoise eNat[®] sample tube cap and place the tube upright onto a level surface.
- Take the sampling swab from the package and twist it in the stool so enough of the stool sticks to the sampling swab.



Enough stool



Too much stool

- Push the sampling swab into the sampling tube and mix so that the sample dissolves into the storage solution in the tube.
- Dispose of the sampling swab for example in mixed waste and seal the sampling tube carefully with the turquoise cap.

**PLEASE NOTE! In the illustrated instructions the swab is snapped in two and half of it is left inside the tube.
IN THIS CASE THE SWAB MUST NOT BE LEFT INSIDE THE TUBE.**

- Attach a name tag you received from the laboratory or filled in yourself onto the sampling tube. The tag must display your name, social security number and day of sampling.
- After sampling, seal the transport containers carefully in the plastic bag.

Storage and transport

The sampling tube must be delivered to the laboratory as soon as possible, preferably on the day of sampling. The sample can be stored in a refrigerator (2–8°C) for three days.